


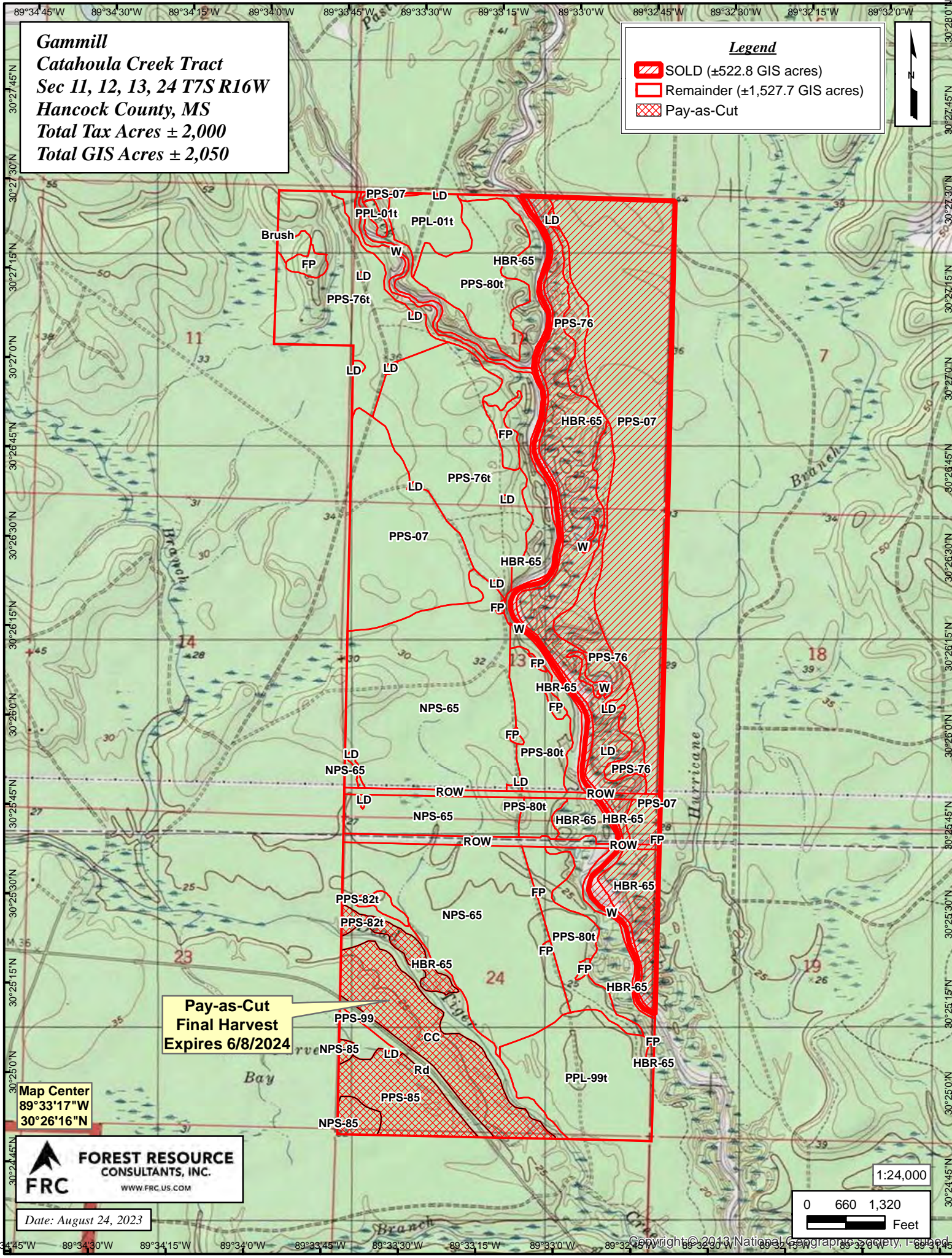


**Gammill  
Catahoula Creek Tract  
Sec 11, 12, 13, 24 T7S R16W  
Hancock County, MS  
Total Tax Acres ± 2,000  
Total GIS Acres ± 2,050**

**Legend**

-  SOLD (±522.8 GIS acres)
-  Remainder (±1,527.7 GIS acres)
-  Pay-as-Cut



**Pay-as-Cut  
Final Harvest  
Expires 6/8/2024**

**Map Center  
89°33'17"W  
30°26'16"N**

**FRC**  
**FOREST RESOURCE  
CONSULTANTS, INC.**  
 WWW.FRC.US.COM

Date: August 24, 2023

1:24,000

0 660 1,320  
Feet