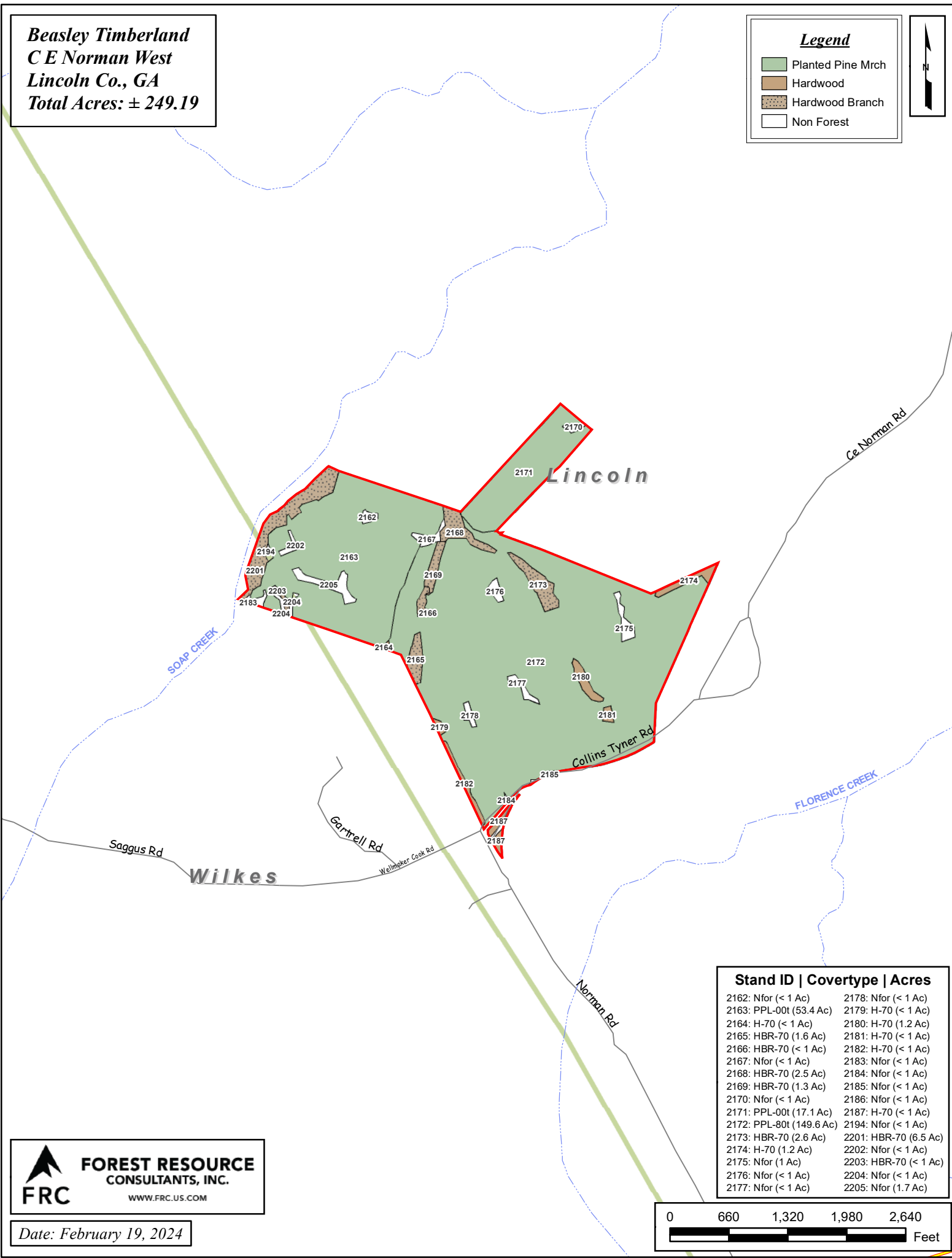
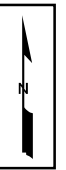


**Beasley Timberland**  
**C E Norman West**  
**Lincoln Co., GA**  
**Total Acres: ± 249.19**

**Legend**

- Planted Pine Mrch
- Hardwood
- Hardwood Branch
- Non Forest



| Stand ID | Covertypes | Acres      |
|----------|------------|------------|
| 2162:    | Nfor       | (< 1 Ac)   |
| 2163:    | PPL-00t    | (53.4 Ac)  |
| 2164:    | H-70       | (< 1 Ac)   |
| 2165:    | HBR-70     | (1.6 Ac)   |
| 2166:    | HBR-70     | (< 1 Ac)   |
| 2167:    | Nfor       | (< 1 Ac)   |
| 2168:    | HBR-70     | (2.5 Ac)   |
| 2169:    | HBR-70     | (1.3 Ac)   |
| 2170:    | Nfor       | (< 1 Ac)   |
| 2171:    | PPL-00t    | (17.1 Ac)  |
| 2172:    | PPL-80t    | (149.6 Ac) |
| 2173:    | HBR-70     | (2.6 Ac)   |
| 2174:    | H-70       | (1.2 Ac)   |
| 2175:    | Nfor       | (1 Ac)     |
| 2176:    | Nfor       | (< 1 Ac)   |
| 2177:    | Nfor       | (< 1 Ac)   |
| 2178:    | Nfor       | (< 1 Ac)   |
| 2179:    | H-70       | (< 1 Ac)   |
| 2180:    | H-70       | (1.2 Ac)   |
| 2181:    | H-70       | (< 1 Ac)   |
| 2182:    | H-70       | (< 1 Ac)   |
| 2183:    | Nfor       | (< 1 Ac)   |
| 2184:    | Nfor       | (< 1 Ac)   |
| 2185:    | Nfor       | (< 1 Ac)   |
| 2186:    | Nfor       | (< 1 Ac)   |
| 2187:    | H-70       | (< 1 Ac)   |
| 2194:    | Nfor       | (< 1 Ac)   |
| 2201:    | HBR-70     | (6.5 Ac)   |
| 2202:    | Nfor       | (< 1 Ac)   |
| 2203:    | HBR-70     | (< 1 Ac)   |
| 2204:    | Nfor       | (< 1 Ac)   |
| 2205:    | Nfor       | (1.7 Ac)   |

**FOREST RESOURCE CONSULTANTS, INC.**  
 WWW.FRC.US.COM

Date: February 19, 2024

