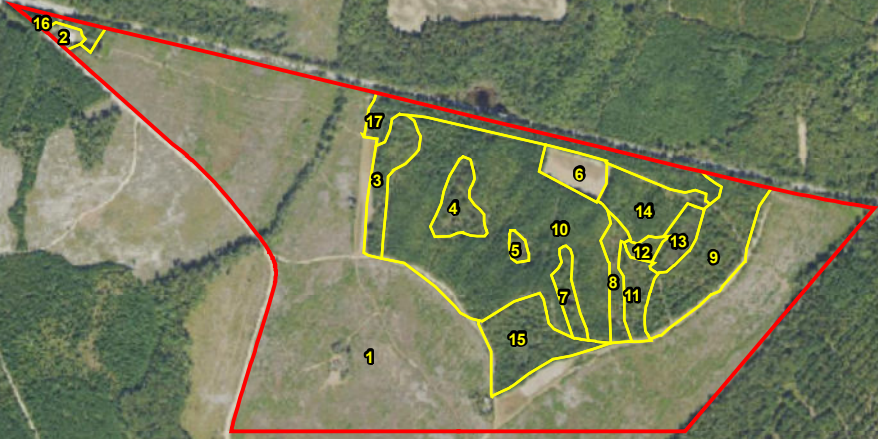


**Landing Road North Tract**  
**Screven Co., GA**  
**Total Acres: ± 193.75**



**Stand ID | Covertypes | Acres**

1: PPL-22 (115.1 Ac)	10: PPL-10 (32.3 Ac)
2: Nfor (< 1 Ac)	11: H-07 (2.3 Ac)
3: H-80 (3.6 Ac)	12: Nfor (< 1 Ac)
4: H-80 (2.8 Ac)	13: H-80 (1.9 Ac)
5: H-80 (< 1 Ac)	14: PPL-10 (4.8 Ac)
6: Nfor (2.6 Ac)	15: H-80 (6.1 Ac)
7: H-80 (1.6 Ac)	16: H-80 (1.1 Ac)
8: Nfor (2.1 Ac)	17: PPL-10 (6.5 Ac)
9: H-07 (9.1 Ac)	



Date: June 25, 2024

Imagery: NAIP

