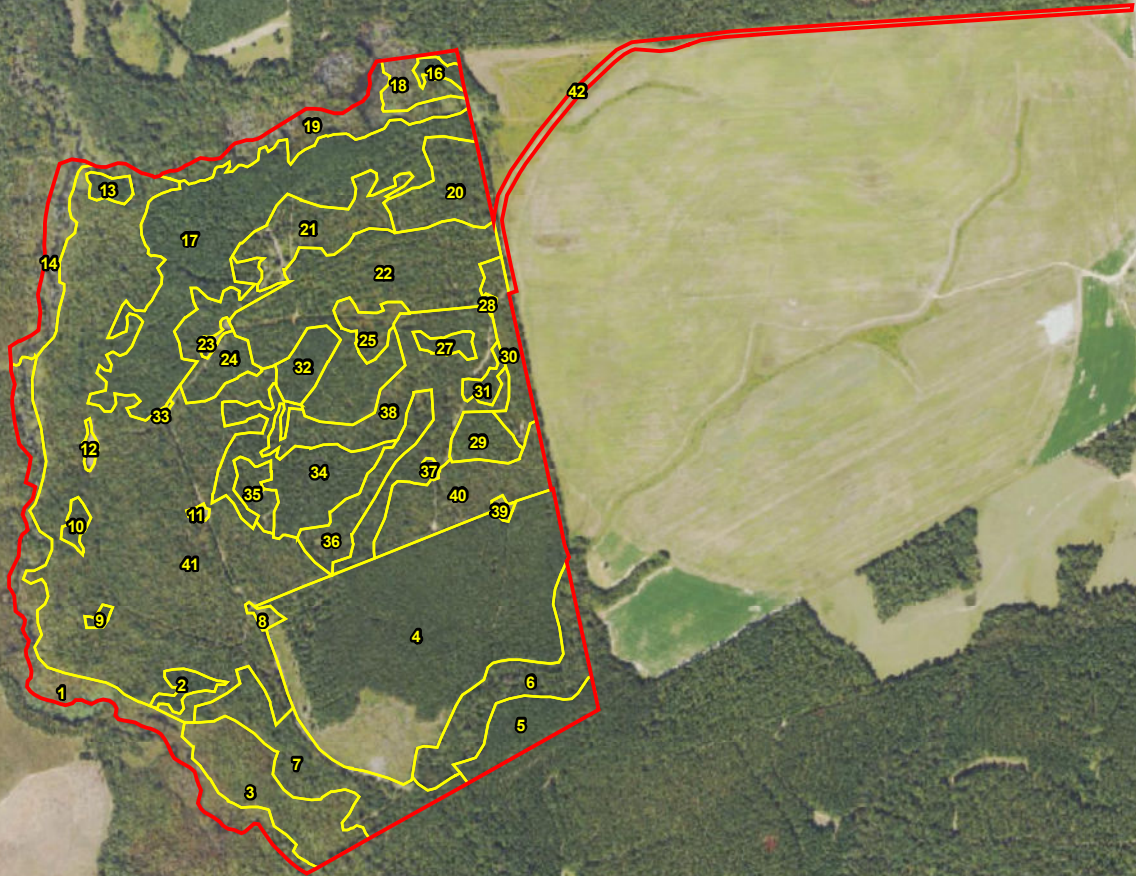


Rawlings Branch North
Washington Co., GA
Total Acres: ± 369.51



Stand ID | Covertype | Acres

1: SMZ-06 (14.2 Ac)	22: NPS-06 (26.9 Ac)
2: PPL-06 (1.5 Ac)	23: Open (< 1 Ac)
3: SMZ-06 (11.4 Ac)	24: H-06 (6.9 Ac)
4: CC (55.1 Ac)	25: Open (2.5 Ac)
5: CC (6 Ac)	27: NPS-06 (1.2 Ac)
6: SMZ-00 (10.4 Ac)	28: Open (< 1 Ac)
7: H-06 (12.1 Ac)	29: NPS-06 (3.1 Ac)
8: Open (< 1 Ac)	30: H-06 (4.4 Ac)
9: NPS-06 (< 1 Ac)	31: NPS-06 (1.2 Ac)
10: NPS-06 (< 1 Ac)	32: NPS-06 (3.1 Ac)
11: Open (< 1 Ac)	33: Open (< 1 Ac)
12: Open (< 1 Ac)	34: NPS-06 (11.6 Ac)
13: NPS-06 (1.1 Ac)	35: H-06 (2.2 Ac)
14: SMZ-80 (4.9 Ac)	36: H-06 (5.4 Ac)
16: NPS-06 (1 Ac)	37: Open (< 1 Ac)
17: NPS-06 (32.4 Ac)	38: H-06 (18.3 Ac)
18: H-06 (3.1 Ac)	39: Open (< 1 Ac)
19: SMZ-06 (7.7 Ac)	40: H-00 (10.1 Ac)
20: H-06 (6.9 Ac)	41: H-00 (86.7 Ac)
21: H-06 (8.3 Ac)	42: Rd (5.6 Ac)



Date: June 18, 2024

Imagery: NAIP

